



COOL ROOF
CERAMIC FLOOR TILES
300x300mm

BRAND NEW DESIGNS



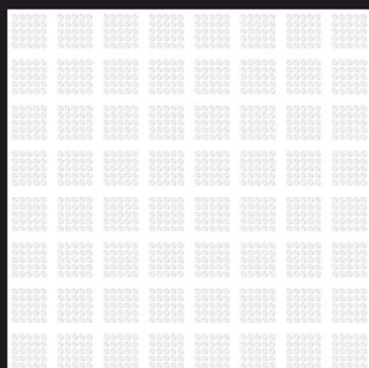
Also Available:

600x1200mm

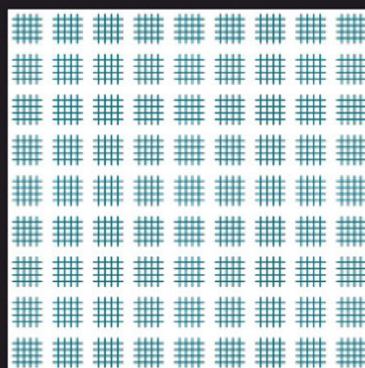
GVT

PGVT

300X
300MM | GLOSSY
FINISH | **COOL ROOF**
CERAMIC FLOOR TILES



COOL ROOF WHITE



COOL ROOF AQUA

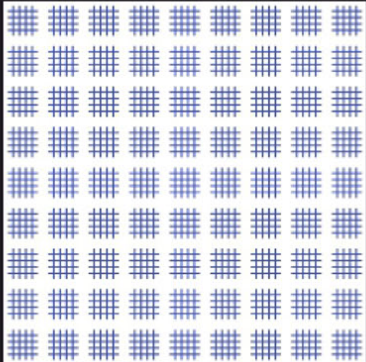
WIDE APPLICATION POSSIBILITIES



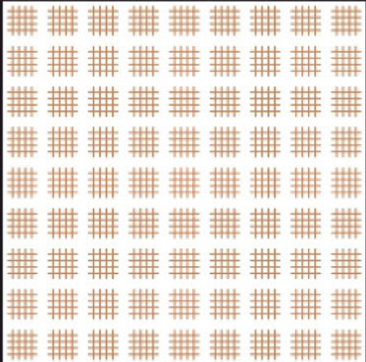
300X
300MM

GLOSSY
FINISH

COOL ROOF
CERAMIC FLOOR TILES



COOL ROOF BLUE

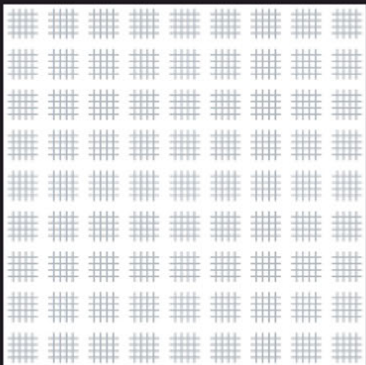


COOL ROOF BROWN

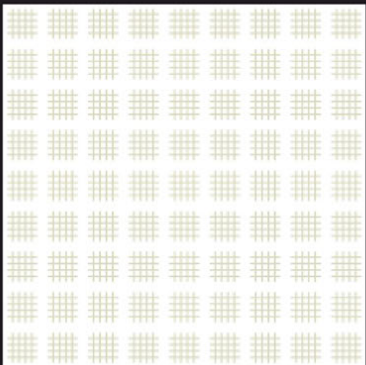
WIDE APPLICATION POSSIBILITIES

- 
Roof/Terraces
- 
Balconies
- 
Courtyards
- 
Swimming
Pools

300X
300MM | GLOSSY | **COOL ROOF**
FINISH | CERAMIC FLOOR TILES



COOL ROOF GRAY

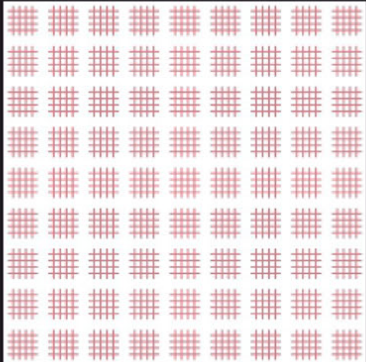


COOL ROOF GREEN

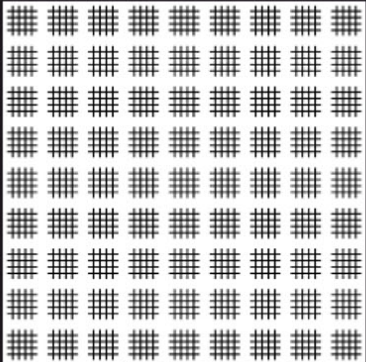
WIDE APPLICATION POSSIBILITIES

- 
Roof/Terraces
- 
Balconies
- 
Courtyards
- 
Swimming Pools

300X 300MM | GLOSSY FINISH | **COOL ROOF**
CERAMIC FLOOR TILES



COOL ROOF PINK

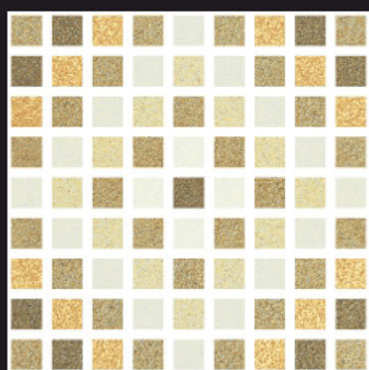


COOL ROOF BLACK

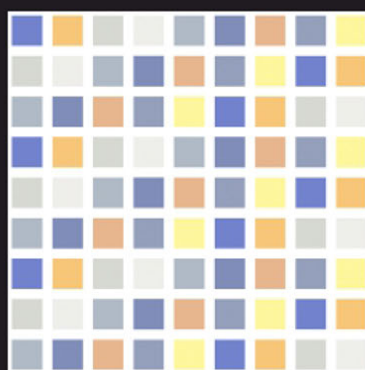
WIDE APPLICATION POSSIBILITIES

-  Roof/Terraces
-  Balconies
-  Courtyards
-  Swimming Pools

300X
300MM | GLOSSY
FINISH | **COOL ROOF**
CERAMIC FLOOR TILES



COOL ROOF MULTY-01

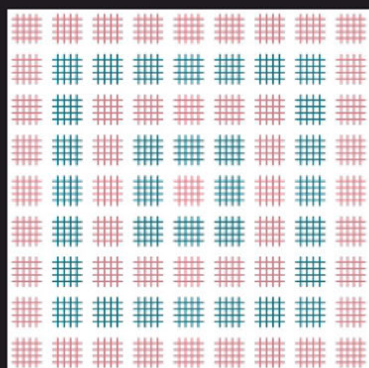


COOL ROOF MULTY-02

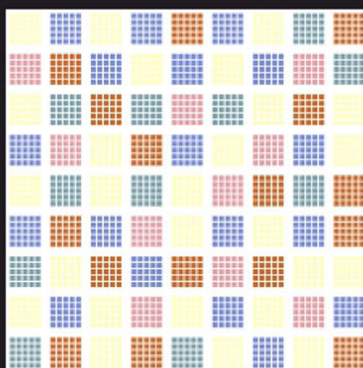
WIDE APPLICATION POSSIBILITIES



300X
300MM | GLOSSY
FINISH | **COOL ROOF**
CERAMIC FLOOR TILES



COOL ROOF MULTY-03

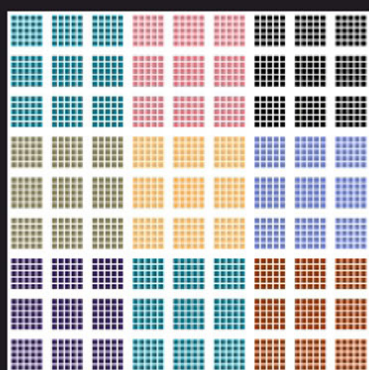


COOL ROOF MULTY-04

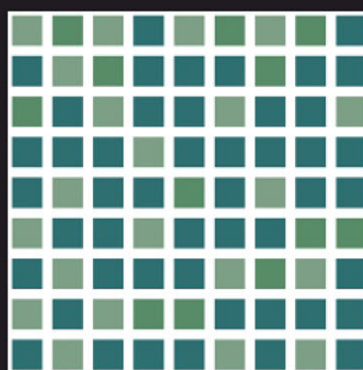
WIDE APPLICATION POSSIBILITIES



300X
300MM | GLOSSY
FINISH | **COOL ROOF**
CERAMIC FLOOR TILES



COOL ROOF MULTY-05

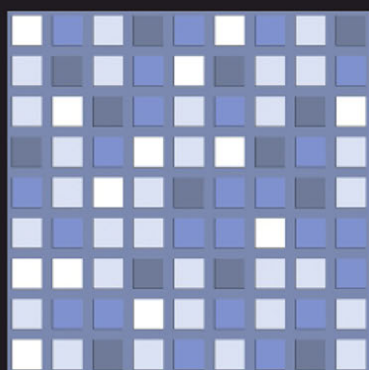


COOL ROOF MULTY-06

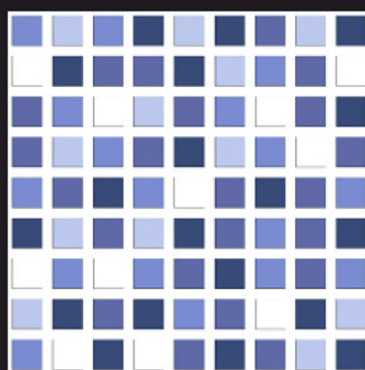
WIDE APPLICATION POSSIBILITIES



300X
300MM | GLOSSY | **COOL ROOF**
FINISH | CERAMIC FLOOR TILES



COOL ROOF MULTY-07



COOL ROOF MULTY-08

WIDE APPLICATION POSSIBILITIES



TECHNICAL SPECIFICATION

CHARACTERISTICS	Requirement as per IS 15622 :2017 E>10, Group BIII	Requirement as per ISO 13006 E>10, Group BIII	OUR VALUES	TEST METHOD
Dimension & Surface Quality				
Length & Width	± 0.20%	± 0.50%	± 0.1%	IS 13630 Part 1/ ISO 10545-2
Thickness	± 5.00%	±10.0%	± 4.0%	
Straightness of Side	± 0.15%	± 0.30%	± 0.1%	
Rectengularity	± 0.20%	±0.50%	± 0.2%	
Surface Flatness				
Center Curvature (%) (max.Deviation)	± 0.30%	+0.5% / -0.3%	± 0.22 %	
Edge Curvature (%) (max.Deviation)	± 0.30%	+0.5% / -0.3%	± 0.22 %	
Corner Warpage (%) (max.Deviation)	±0.30%	±0.5%	± 0.22 %	
Surface Quality	Min. 95 % of tiles will be free from visible defects	Min. 95 % of tiles will be free from visible defects	Min. 95 % of tiles will be free from visible defects	
Physical Properties				
Water Absorption	E ≥ 10 % when it exceeds 20 % this shall be indecated by the manufacturer	E ≥ 10 % when it exceeds 20 % this shall be indecated by the manufacturer	Av 10-20%	IS 13630 Part 2/ ISO 10545-3
Modulus of Rupture [N/mm2]	Min 15	Average Min 15	Average 15	IS 13630 Part 6/ ISO 10545-4
Breaking Strength in N	Min 600	Not Less Than 600	Min 600	
Moisture Expansion in mm/m	0.04	Test Method Available	0.04	IS 13630 Part 3/ ISO-10545-10
Scratch Hardness of Surface (Mohs)	Min 3		Min-3	IS 13630 Part 13
Coefficient of Linear Thermal Expansion from Embiant Temperature To 100 °C	9X 10 ⁻⁶ K ⁻¹ Max	Test Method Available	Max 8 X 10 ⁻⁶ K ⁻¹ Max	IS 13630 Part 4/ ISO 10545-8
Thermal Shock Resistance	10 Cycle min	Test Method Available	10 Cycle Min	IS 13630 Part 5/ ISO-10545-9
Crazing Resistance	4 Cycle @ 7.5 Bar min	Required	4 Cycle @ 7.5 Bar min	IS 13630 Part 9/ ISO 10545-11
Chemical Resistance				
Stain Resistance	Min Class 1	Min Class 3	Class-1	IS 13630 Part 8 & ISO 10545-14
Resistance to Household Chemicals	Min Class AA	Minimum GB	Class AA	IS 13630 Part 8/ ISO 10545-13
Resistance to Acids and Alkalis (with exception of hydrofluoric acid and its compounds)	Required if Agreed	Test Method Available	Class AA	

PACKAGING DETAIL : DIGITAL WALL TILES

DOMESTIC PACKING DETAIL				
Size	Thickness	No. Of Tiles Per Box	Coverage Area	Weight
300x300mm	9.5-10mm	9 Pcs.	0.72 m ²	13.5 Kgs. (Approx)

- *Notes:**
- All technical specifications in this catalogue are for premium grade material only.
 - **SHADE/SIZE VARIATIONS** are inherent characteristics of ceramics. Certain products purposely have variations which are part of design & process. The same have been indicated. It is recommended to blend tiles by mixing tiles from various boxes & check for natural hue before fixing the tiles.
 - It is recommended to check the tiles before laying/fixing. Quality standards cover only 1st/premium quality only.
 - Company's liability is limited to material that has not been laid.
 - **NO COMPLAINT SHALL BE ENTERTAINED ON TILES ALREADY FIXED/LAID.**
 - The liability is also limited to the material supplied by the company; no other claim is entertained under any circumstances.
 - No complaint is entertained on decoration done on tiles, other than the ones
 -
- GENERAL NOTE:** ANY COMPLAINT MUST BE BROUGHT TO THE COMPANY’S NOTICE WITHIN 10 DAYS OF PURCHASE & BEFORE FIXING OF TILES.